



2025 Healthquest PCCA Setup Guide

Updated: July 2025

****Important Notice:**** The information and content presented in this document include screenshots and excerpts that have been adapted from materials owned by the respective content owners. These adaptations are intended for illustrative and educational purposes only. All original content remains the intellectual property of the respective owners. Any reproduction or further dissemination of this content must adhere to the original copyright and usage policies of the content owners.

<i>Introduction</i>	5
<i>Healthquest Specific Considerations</i>	6
<i>Summary of Steps Involved</i>	6
<i>Modifying the ASaP Template in Healthquest</i>	7
<i>Updating the ASaP Template – Adding Screening Reviewed by PCCA</i>	9
<i>Building CDS Queries</i>	11
<i>Quarterly Reporting Queries</i>	13
ESPCN – Quarterly – Panel Full	13
ESPCN – Quarterly – Panel Females	13
ESPCN – Quarterly – Panel Males	13
ESPCN – Quarterly – Panel Other/Unknown/X	14
ESPCN – Quarterly – Age Queries	14
ESPCN – Quarterly – VR – Patients Verified in 6 Months	15
ESPCN – Quarterly – VR – Appointments in 6 Months	15
ESPCN – Quarterly – VR – Patients Verified in 3 Years	16
ESPCN – Quarterly – VR – Appointments in 3 Years	16
ESPCN – Quarterly – Eligible 18+	16
ESPCN - Quarterly – Exercise Due	17
ESPCN - Quarterly – Tobacco Assessment Due	17
ESPCN - Quarterly – BP Due	18
ESPCN - Quarterly – Height & Weight Due	18
ESPCN - Quarterly – Pap Eligible	19
ESPCN - Quarterly – Pap Due	19
ESPCN - Quarterly – Mammo Eligible	20
ESPCN - Quarterly – Mammo Due	20
ESPCN - Quarterly – CRC Eligible	21
ESPCN - Quarterly – CRC Due	21
ESPCN - Quarterly – Diabetes Eligible	22
ESPCN - Quarterly – Diabetes Due	22
ESPCN - Quarterly – Lipids Eligible	23
ESPCN - Quarterly – Lipids Due	23
ESPCN - Quarterly – CV Risk Eligible	23

ESPCN - Quarterly – CV Risk Due	24
<i>Quarterly QI Queries.....</i>	<i>25</i>
ESPCN - Quarterly QI - Active Patients (Denominator)	25
ESPCN – Quarterly QI - Patients 75+ (Denominator)	25
ESPCN – Quarterly QI - Chronic Disease Patients (Denominator)	26
ESPCN – Quarterly QI - Patients Seen in the Last 3 Years (Numerator)	26
ESPCN – Quarterly QI - Patients 75+, Seen in the Last Year (Numerator)	27
ESPCN – Quarterly QI - Chronic Disease Patients, Seen in the Last Year (Numerator)	27
ESPCN – Quarterly QI – Patients with Diabetes (Denominator)	28
ESPCN – Quarterly QI – Patients with Diabetes with A1c in the Last Six Months (Numerator).....	28
ESPCN – Quarterly QI – Patients with Diabetes with a DFE in the Last Year (Numerator).....	29
ESPCN – Quarterly QI – Pts with DM, A1c result, uncontrolled – 1 year (Numerator)	29
ESPCN – Quarterly QI – Pts with DM, A1c result – 1 year (Denominator).....	29
<i>Quarterly QI Hypertension Queries.....</i>	<i>30</i>
ESPCN – Quarterly QI – Pts with HTN, BP measured, elevated – 1 year (Numerator).....	31
ESPCN – Quarterly QI – Pts with HTN, BP measured – 1 year (Denominator).....	31
ESPCN – Quarterly QI – Pts with HTN, BP measured – 6 months (Numerator)	32
ESPCN – Quarterly QI – Pts with HTN (Denominator).....	32
<i>Outreach Queries.....</i>	<i>32</i>
ESPCN – Outreach – Adults, No Appointment in 3 Years	32
ESPCN – Outreach – Pediatrics, No Appointment in 2 Years	33
ESPCN – Outreach – 75+, No Appointment in 1 Year.....	33
ESPCN – Outreach – Chronic Disease, No Appointment in 1 Year	34
ESPCN – Outreach – Pap Due, No Appointment in 1 Year	35
ESPCN – Outreach – Mammo Due, No Appointment in 1 Year	36
ESPCN – Outreach – CRC Due, No Appointment in 1 Year	36
ESPCN – Outreach – Diabetes Due, No Appointment in 1 Year	37
ESPCN – Outreach – Lipids Due, No Appointment in 1 Year	37
<i>Tracking Query.....</i>	<i>38</i>
ESPCN – Tracking – Screening Reviewed by PCCA in 1 Week.....	38
ESPCN – Tracking – Outreach	38
<i>Notifications</i>	<i>38</i>
<i>Building Worklist Templates.....</i>	<i>39</i>

Introduction

Each EMR has a searching tool built in to pull data or lists of patients based on user set criteria. These criteria can be highly customized and must be carefully structured to ensure accuracy. The guides below will show you what a full setup should look like from start to finish. Keep in mind that through collaboration you may have to adjust your queries as time goes on, due to different processes used by the clinics. This guide should be used as the starting point or a reference for how queries are built and what they should look like.

KEEP IN MIND: SCREENED VS DUE

Most of the queries that you will build will search for patients who are DUE for different tests. This is usually done by searching for the ABSENCE of certain labs / documents / scans / chart data in a specific date range. A query that searches for patients who are due can be easily converted into a list of screened patients by changing the “and” option (except the first line of results) to “or” and removing the “not” filter that is put into each line. Examples will be given below.

USING THE ‘NOT’ FUNCTION

Usually when queries are built, they will search for if the patient HAS something. In your default build you will use the “not” function to change the criteria. This will search for if the patient DOES NOT have something. This is the key difference between a screened and a due query. Due queries are built using the “not” function. Screened Queries are built without it.

“AND” “OR” FUNCTIONS

“AND” function is used between criteria in your queries. An “AND” function between two criteria means that the search must match BOTH those criteria. Ex: Pts of Dr X AND Appointment in last 6 months. Matching both criteria will cause the patient to be on the results. This is how most of our queries will be built.

“OR” Function is used when only one of many criteria need to be matched. A chart can be searched using the various filters and needs only one match to end up on the result list.

Healthquest Specific Considerations

BEFORE STARTING TO BUILD

Try to ensure a few things. Firstly, determine the end date reasons that the clinic uses by speaking with the IF. Usually there are 3 end date reasons in HQ that are always filtered when a new setup is created. These are Deceased, Inactive, Long-term Care. These are some of the default end date reasons that are in HQ out of the box. Additional reasons can be added by the clinic, and these may be used in different ways, so it is critical to obtain this information from your IF to correctly build all queries. If the clinic uses end dates then the end date reasons do not need to be excluded.

LEVELS

HQ queries can be structured into levels. This causes the search to be divided into different filters that are applied one at a time. This helps to organize the query and give a good visual when viewing it in the menu. This also ensures accurate results.

COPYING LINES

You may notice that you must enter multiple lines into a search that only has one value changed. Sometimes it is easier to copy a line within a query and change a value and save the line. This will save the work of creating a new search line from scratch.

COPYING QUERIES

From the main menu you can make a copy of a query that you have already built. This is useful for the setup you are about to do. Some queries can be built by copying an existing query and building upon it. This will save a lot of time but must be done carefully.

THIS GUIDE WILL SHOW YOU THE FOLLOWING:

1. MODIFYING THE ASAP
2. STEP BY STEP QUERY INSTRUCTIONS
3. CREATING WORKLIST TEMPLATES

Summary of Steps Involved

Week Prior (or a few days prior)

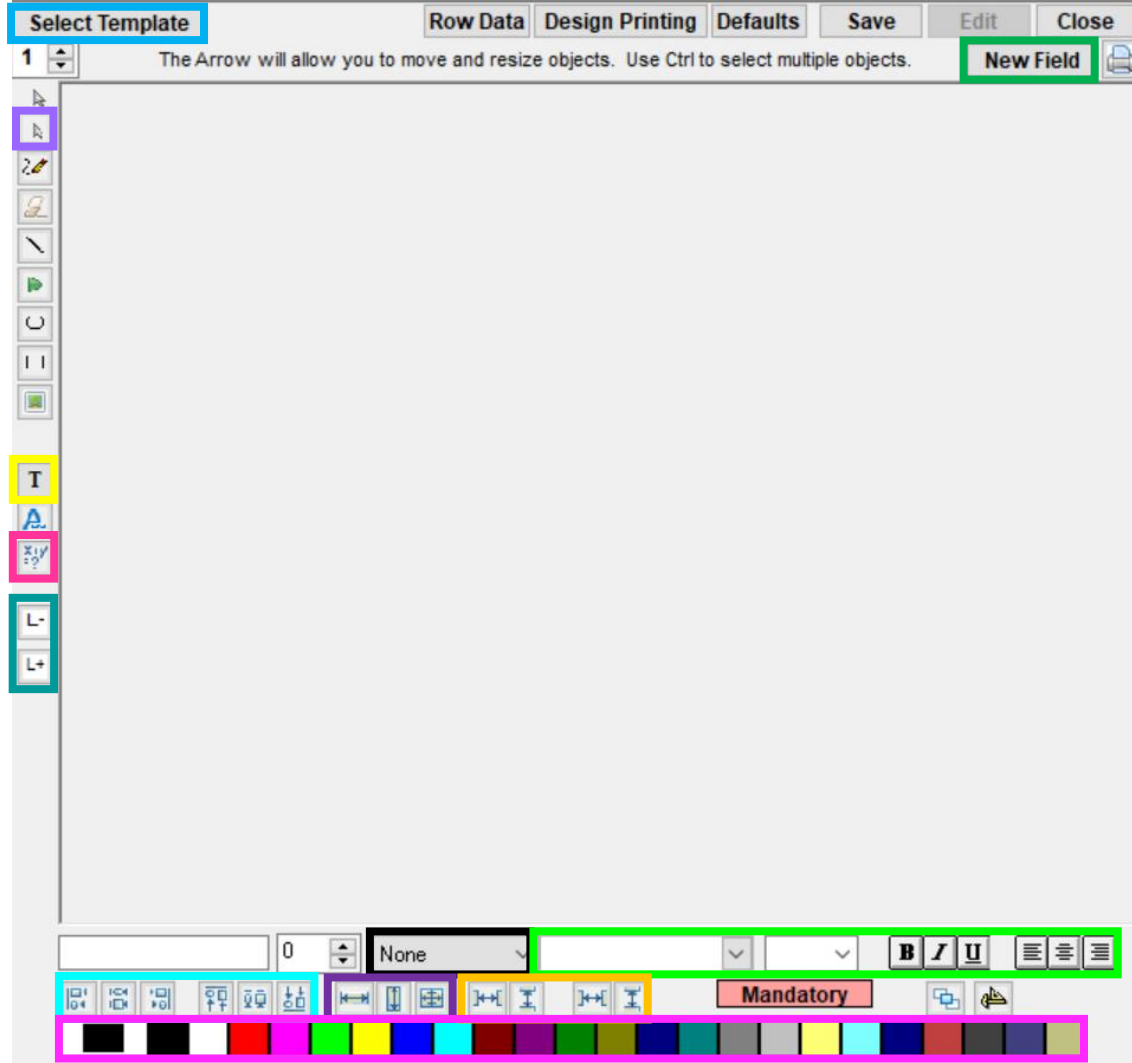
1. Contact HQ 780-438-3762 and ask to update the clinic's template date fields to 20.

Day of:

1. Edit the ASaP template to match the current standard.
2. Build active panel query.
3. Copy active panel query as starting point for eligible queries.
4. Copy eligible queries and add test information to create due queries.
5. Once queries are done, take screenshots and run full baselines.

Open the template editor. **Setup -> Charting Setup -> Template Design**

Find the ASaP template in the list. **Select template -> Edit existing -> ASaP template -> Next -> Finish.**



LIGHT BLUE: Select Template = edit an existing template or create a new template.

GREEN: New Field = create new fields.

LIGHT PURPLE: Selection tool = use to move and resize objects, CTRL click to select multiple objects or click and drag to select all fields within the designated area.

YELLOW: Text tool = add text.

PINK: Computed Fields = use expressions to pull information from the chart into the template.

TEAL: Decrease/Increase Length = make the template longer or shorter.

BLACK: Field outline options = None is the default, change to box to outline the field.

LIME: Text options = (left to right) Font, Size, Bold, Italics, Underline, Align Left, Align Centre, Align Right

CYAN: Align Fields = (left to right) Align Left, Align Centre, Align Right, Align Top, Align at Centre, Align Bottom. Aligns the fields. Click your primary field then select (CTRL + click) the one you would like to have match it.

DARK PURPLE: Size Fields = (left to right) Size width, Size Height, Size both. Makes fields the same size.

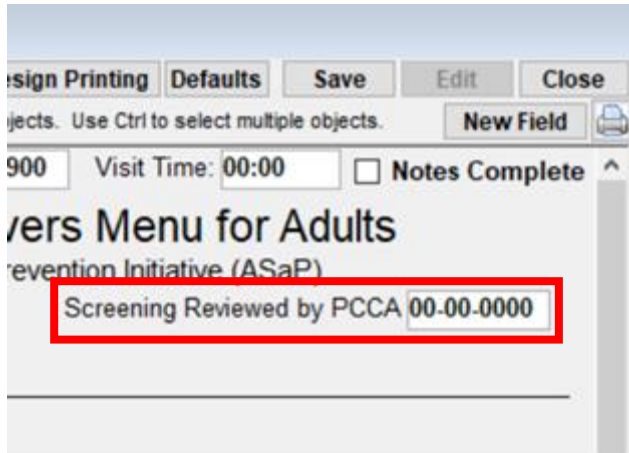
Click your primary field then select (CTRL + click) the one you would like to have match it.

ORANGE: Evenly space fields.

MAGENTA: Text colors. The color currently in use will appear in the first box on the left.

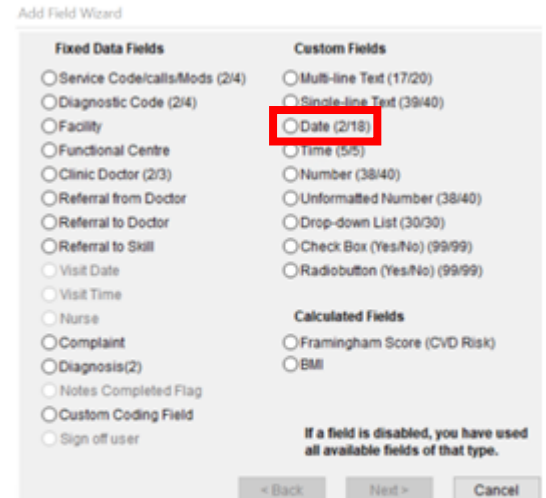
Updating the ASaP Template – Adding Screening Reviewed by PCCA

Add Date stamp “Screening Reviewed by PCCA”. Select New Field -> Date -> Next. Then name the field Screening Reviewed by PCCA and select finish. Drop the field onto the ASaP template underneath the title. Stretch the text field if required to ensure all the text is visible.



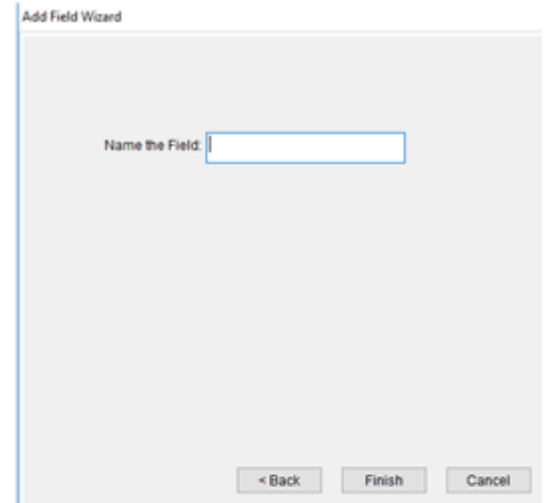
The screenshot shows the ASaP template interface. At the top, there are buttons for 'Design Printing', 'Defaults', 'Save', 'Edit', and 'Close'. Below these is a 'New Field' button. The main area displays '900 Visit Time: 00:00' and a 'Notes Complete' checkbox. The title 'Screening Menu for Adults' is visible, followed by 'Prevention Initiative (ASaP)'. A red box highlights the newly added field 'Screening Reviewed by PCCA' with the value '00-00-0000'.

Click new field, in the top right corner,



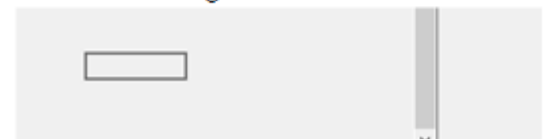
The 'Add Field Wizard' dialog box is shown. It has two columns: 'Fixed Data Fields' and 'Custom Fields'. In the 'Custom Fields' column, the 'Date (2/18)' option is selected and highlighted with a red box. Other options include 'Multi-line Text (17/20)', 'Single-line Text (39/40)', 'Time (5/5)', 'Number (38/40)', 'Unformatted Number (38/40)', 'Drop-down List (30/30)', 'Check Box (Yes/No) (99/99)', 'Radiobutton (Yes/No) (99/99)', 'Calculated Fields', 'Framingham Score (CVD Risk)', and 'BMI'. At the bottom, there are buttons for '< Back', 'Next >', and 'Cancel'.

Select “date” radio button, and next, enter “Screening reviewed by PCCA” as the name.



The 'Add Field Wizard' dialog box is shown in the 'Name the Field' step. A text box is provided for entering the field name. At the bottom, there are buttons for '< Back', 'Finish', and 'Cancel'.

And finish. Click your mouse where you want the date box to go.



The screenshot shows the ASaP template with the date box placed in the main area. The box is empty and ready for use.

Reviewed by PCCA 00-00-0000

The text box will be cut off.

To correct this:

- Click on the words and a black box will appear highlighting the words.
- Place your mouse on the left edge, until you see a slanted double arrow.
- Drag the black box wider, so all the wording is visible.

Screening Reviewed by PCCA 00-00-0000

- With the words highlighted in black, press and hold the 'Ctrl' button and click on the date box, release the ctrl button and both items will be highlighted black.
- Use the arrow keys on the keyboard to move these items to where you want them.
- If you want to move just one item, click on the one item to move, and drag it around using your mouse.

Make sure there is a date field for:

- Pap
- Lipid Panel
- Glucose Fasting
- Hemoglobin A1C
- CV Risk
- FIT
- Colonoscopy
- Mammogram

Building CDS Queries

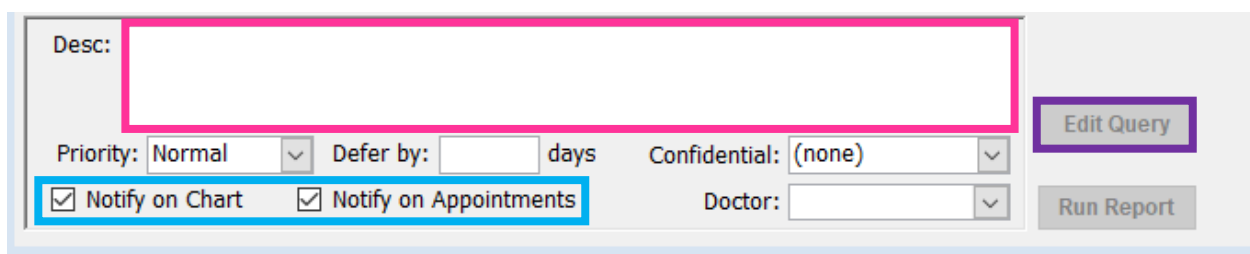
To build CDS Queries you will create them in the CDS Query Setup. To open this, go into Setup -> Charting Setup -> CDS Query Setup.

Before starting to build queries, find out if the clinic uses End Dates and/or End Date Reasons. If they use End Date Reasons but no date, you will need to add the end date reasons into your queries as exclusions. If they use End Dates (with or without a reason) the patient will automatically be removed from the lists.

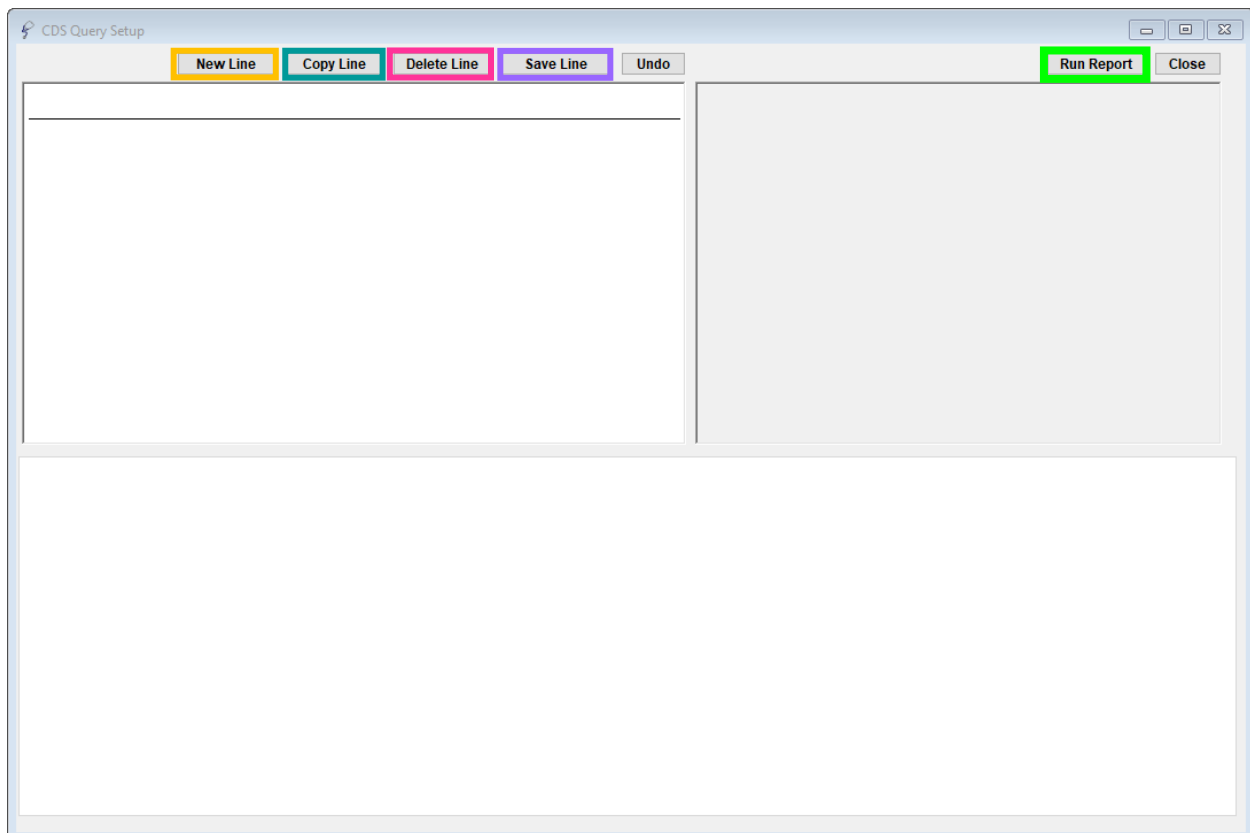
To create a new query, select New.



The bottom of the window will change to look like this.



Unselect **Notify on Chart** and **Notify on Appointments**, these fields create notifications. Type your query title in the **Description** box. Click Save in the top right corner, then **Edit Query**. The query window will then open, this is where you add your criteria.



You will create a **New Line** to start selecting criteria for your query. You should always start with Clients. This will allow you to select gender, age, default doctor, etc. **Save Line** once created. Continue with your criteria, adding information then saving each line. If you need to conduct multiple searches in the same area of the EMR you can **Copy Line** and just change the information. You can also **Delete Line** if you need to remove something. After you add each line, **Run Report** to verify that the criteria is working.

When building queries we start with the active panel, how the clinic or physician identifies who their patients are. Usually we use client type: Valid Alberta Patient, Default Doctor and any additional criteria (ex: and not End Date Reason: Inactive). We will start with Quarterly Reporting Queries, eligible then due. Once those are complete, we build outreach by adding additional criteria to the Quarterly Reporting Due queries. We will also build a weekly tracking query and if the clinic would like notifications, we will build these based off the quarterly reporting due queries with any additional clinic specifications.

Quarterly Reporting Queries

ESPCN – Quarterly – Panel Full

Create a new query titled: ESPCN – Quarterly – Panel Full, uncheck the notify box. Save then select Edit Query. Select New Line. Select Clients and Ok.

ESPCN - Quarterly - Panel Full
Patients Patient of TEST Type:Valid Alberta Patient
AND NOT Patients End Date Reason:Inactive
AND NOT Patients End Date Reason:Long Term Care
AND NOT Patients End Date Reason:Deceased

Line 1: Clients, select default doctor, select Valid Alberta Patients.

Line 2+: (and not) Clients, select end date reason inactive. Copy this line for all end date reasons that need to be excluded.

**Note – if the clinic uses end dates, no need to exclude end date reasons.*

ESPCN – Quarterly – Panel Females

From your list of CDS Queries, select the Panel Full query you created. Select Copy Query. In the Description box, rename the query ESPCN – Quarterly – Panel Females. Save and Edit Query.

ESPCN - Quarterly - Panel Females
Female Patients Patient of TEST Type:Valid Alberta Patient
AND NOT Patients End Date Reason:Inactive
AND NOT Patients End Date Reason:Long Term Care
AND NOT Patients End Date Reason:Deceased

Edit the first line of the query by checking off gender, then use the dropdown to select Female.

ESPCN – Quarterly – Panel Males

Copy your Panel Females query. Rename the copy ESPCN – Quarterly – Panel Males. Change the gender selection to Male. Save and Edit Query. Save Line. Run Report.

ESPCN - Quarterly - Panel Males
Male Patients Patient of TEST Type:Valid Alberta Patient
AND NOT Patients End Date Reason:Inactive
AND NOT Patients End Date Reason:Long Term Care
AND NOT Patients End Date Reason:Deceased

Edit the first line of the query by changing the gender selection to male.

ESPCN – Quarterly – Panel Other/Unknown/X

Copy your ESPCN – Quarterly - Panel Males query. Rename the copy ESPCN -Quarterly – Panel Other/Unknown/X Gender.

**Note: In a recent 2023 update, Healthquest has added Non-binary to the gender selections available in the client card. At the time of this manual's creation, non-binary is currently not available in the CDS Query builder options. Once this change has been made, copy the listed steps to add Non-binary into the query criteria.*

ESPCN - Quarterly - Panel Other/Unknown/X Gender	
Other Patients Patient of TEST Type:Valid Alberta Patient	
AND (NOT Patients End Date Reason:Inactive	
AND NOT Patients End Date Reason:Long Term Care	
AND NOT Patients End Date Reason:Deceased)	
AND Unknown Patients Patient of TEST Type:Valid Alberta Patient	
AND (NOT Patients End Date Reason:Inactive	
AND NOT Patients End Date Reason:Long Term Care	
AND NOT Patients End Date Reason:Deceased)	
AND X Patients Patient of TEST Type:Valid Alberta Patient	
AND (NOT Patients End Date Reason:Inactive	
AND NOT Patients End Date Reason:Long Term Care	
AND NOT Patients End Date Reason:Deceased)	

Line 1: Change gender selection from male to other.

Line 2-4: Set end date reasons to level 2.

Line 5: Copy line 1 and change gender selection from other to unknown.

Lines 5-7: Copy lines 2-4.

Line 8: Copy line 5 and change gender selection from unknown to x.

Lines 9-11: Copy lines 2-4.

ESPCN – Quarterly – Age Queries

Copy your Panel Full query. Rename the copy ESPCN – Quarterly – Panel 0-9. Save. Edit Query.

ESPCN - Quarterly - Panel Ages 0-9	
Patients over 0 under 10 Patient of TEST Type:Valid Alberta Patient	
AND NOT Patients End Date Reason:Inactive	
AND NOT Patients End Date Reason:Long Term Care	
AND NOT Patients End Date Reason:Deceased	

Edit the first line of the query by checking off age over 0 and age under 10.

Copy this query, rename it ESPCN – Quarterly – Panel 10-19. Set the age range to over 10 under 20.

Copy this query, rename it ESPCN – Quarterly – Panel 20-29. Set the age range to over 20 under 30.

Copy this query, rename it ESPCN – Quarterly – Panel 30-39. Set the age range to over 30 under 40.

Copy this query, rename it ESPCN – Quarterly – Panel 40-49. Set the age range to over 40 under 50.

Copy this query, rename it ESPCN – Quarterly – Panel 50-59. Set the age range to over 50 under 60.

Copy this query, rename it ESPCN – Quarterly – Panel 60-69. Set the age range to over 60 under 70.

Copy this query, rename it ESPCN – Quarterly – Panel 70-79. Set the age range to over 70 under 80.

Copy this query, rename it ESPCN – Quarterly – Panel 80-89. Set the age range to over 80 under 90.

Copy this query, rename it ESPCN – Quarterly – Panel 90+. Set the age range to over 90 under 120.

ESPCN – Quarterly – VR – Patients Verified in 6 Months

Copy your Panel Full query, rename it: ESPCN – Quarterly – VR – Patients Verified in 6 Months. Save. Edit Query.

Add a New Line. Clients. Check off **Default Doctor, select appropriate**. Check off **Client Type, select Valid Alberta Patients**. Check off the **Verified box** and the **Date** field beneath it. Set the date range as **In the last 6 Months**. Save Line.

ESPCN – Quarterly – VR – Patients Verified in 6 Months	
Patients Patient of TEST Type:Valid Alberta Patient	
PDI Verified Verified In the last 6 Months	
AND NOT Patients End Date Reason:Deceased	
AND NOT Patients End Date Reason:Inactive	
AND NOT Patients End Date Reason:Long Term Care	
AND Appointment In the last 6 Months Done	

Line 1: Clients, Type: Valid Alberta Patients. Check off PDI Verified, PDI Date in the last 6 months.

Line 2+: (and not) Clients, any end date reasons the clinic uses.

Line 5: Add an 'Appointment' line, Appointment Date: in the last 6 months, Appointment state: Done

ESPCN – Quarterly – VR – Appointments in 6 Months

Copy the Patients Verified in 6 Months query. Rename it ESPCN – Quarterly – VR – Appointments in 6 Months. Save and Edit Query.

ESPCN – Quarterly – VR – Appointments in 6 Months	
Patients Patient of TEST Type:Valid Alberta Patient	
AND NOT Patients End Date Reason:Deceased	
AND NOT Patients End Date Reason:Inactive	
AND NOT Patients End Date Reason:Long Term Care	
AND Appointment In the last 6 Months Done	

Line 1: Edit the first line of the query, remove the PDI verified check box and the PDI Date check box. Uncheck 2x so box is blank). Save Line.

ESPCN – Quarterly – VR – Patients Verified in 3 Years

Copy the Verified in 6 Months query. Rename it ESPCN – Quarterly – VR – Verified in 3 Years. Save and Edit Query. Change Verified in the last 6 Months to in the last 3 years. Save Line. Change the appointment in the last 6 months line to appointment in the last 3 years.

ESPCN – Quarterly – VR – Patients Verified in 3 Years
Patients Patient of TEST Type:Valid Alberta Patient PDI Verified Verified In the last 3 Years
AND NOT Patients End Date Reason:Deceased
AND NOT Patients End Date Reason:Inactive
AND NOT Patients End Date Reason:Long Term Care
AND Appointment In the last 3 Years Done

Line 1: Edit the first line of the query, change the PDI Date range to in the last 3 years.

Line 2: Change the appointment date range to in the last 3 years.

ESPCN – Quarterly – VR – Appointments in 3 Years

Copy the Appointments in 6 Months query. Rename it ESPCN – Quarterly – VR – Appointments in 3 Years. Save and Edit Query.

ESPCN – Quarterly – VR – Appointments in 3 Years
Patients Patient of TEST Type:Valid Alberta Patient
AND NOT Patients End Date Reason:Deceased
AND NOT Patients End Date Reason:Inactive
AND NOT Patients End Date Reason:Long Term Care
AND Appointment In the last 3 Years Done

Line 2: Change the appointment date range to in the last 3 years.

ESPCN – Quarterly – Eligible 18+


Copy the Panel Full query. Rename it ESPCN – Quarterly – Eligible 18+. Save and Edit Query.

ESPCN – Quarterly – Eligible 18+
Patients over 18 under 120 Patient of TEST Type:Valid Alberta Patient
AND NOT Patients End Date Reason:Inactive
AND NOT Patients End Date Reason:Long Term Care
AND NOT Patients End Date Reason:Deceased

Line 1: Check off the boxes beside Age over and Age under. Set the Age over field to 18 and the Age under field to 120.

ESPCN- Quarterly – Exercise Assessment Due

Copy your Eligible 18+ query. Rename it ESPCN - Quarterly - Exercise Due. Save. Edit Query.

ESPCN - Quarterly – Exercise Assessment Due	
Patients over 18 Patient of  Type:Valid	
Alberta Patient	
AND NOT Patients End Date Reason:Long Term	
Care	
AND NOT Patients End Date Reason:Deceased	
AND NOT Patients End Date Reason:Inactive	
AND (NOT Chart Note: ASaP)	
Exercise_Assessment_Date In the last 1	
Years (or is blank)	


****The following are set as Level 2****

Line 5: New Line – Chart Note (and not), select ASaP template, check off other date, select Exercise date.

Optional Line 6: If the clinic uses a lifestyle assessment, add in this as well.

ESPCN- Quarterly – Tobacco Assessment Due

Copy your eligible 18+ query. Rename it ESPCN – Quarterly – Tobacco Due. Save. Edit Query.

ESPCN - Quarterly – Smoking Assessment Due	
Patients over 18 Patient of  Type:Valid	
Alberta Patient	
AND NOT Patients End Date Reason:Long Term	
Care	
AND NOT Patients End Date Reason:Deceased	
AND NOT Patients End Date Reason:Inactive	
AND (NOT Chart Note: ASaP)	
Tobacco_Assessment_Date In the last 1	
Years (or is blank)	

****The following are set as Level 2****

Line 5: New Line – Chart Note (and not), select ASaP template, check off other date, select Tobacco date.

Optional Line 6: If the clinic uses a lifestyle assessment, add in this as well.

ESPCN- Quarterly – BP Due

Copy your eligible 18+ query. Rename it ESPCN – Quarterly – BP Due. Save. Edit Query.

ESPCN - Quarterly - BP Due
Patients over 18 Patient of TEST Type:Valid Alberta Patient
AND NOT Patients End Date Reason:Inactive
AND NOT Patients End Date Reason:Long Term Care
AND NOT Patients End Date Reason:Deceased
AND (NOT Chart Data: In the last 1 Years BLOOD PRESSURE >= 1
AND NOT Chart Data: In the last 1 Years BP >= 1
AND NOT Chart Data: In the last 1 Years BP (SITTING) >= 1
AND NOT Chart Data: In the last 1 Years BP (SUPINE) >= 1)

****The following are set as Level 2****

Using chart data, exclude all available BP fields >=1 in the EMR used in the last year. These are variable depending on the clinic.

Tip: look for systolic and diastolic fields as well. If the clinic has an ASaP BP date, exclude this in the last year as well.

ESPCN- Quarterly – Height & Weight Due

Copy your eligible 18+ query. Rename it ESPCN – Quarterly – Height & Weight Due. Save. Edit Query.

ESPCN - Quarterly - Height & Weight Due
Patients Patient of TEST Type:Valid Alberta Patient
AND NOT Patients End Date Reason:Inactive
AND NOT Patients End Date Reason:Long Term Care
AND NOT Patients End Date Reason:Deceased
AND (NOT Chart Data: In the last 20 Years HEIGHT >= 1
AND NOT Chart Data: In the last 20 Years HT >= 1
AND NOT Chart Data: In the last 20 Years HT. >= 1)
AND (NOT Chart Data: In the last 3 Years WEIGHT >= 1
AND NOT Chart Data: In the last 3 Years WT >= 1
AND NOT Chart Data: In the last 3 Years WT. >= 1)

****The following are set as Level 2****

Using chart data, exclude all available Height fields >=1 in the EMR used in the 10/20/30 etc.. years. These are variable depending on the clinic.

Using chart data, exclude all available Weight fields >=1 in the EMR used in the 3 years. These are variable depending on the clinic.

If the clinic has an ASaP BMI date, exclude this in the last 3 years as well.

ESPCN- Quarterly – Pap Eligible

Copy your Panel Females query. Rename it ESPCN – Quarterly – Pap Eligible. Save. Edit Query.

ESPCN - Quarterly - Pap Eligible
Female Patients over 25 under 70 Patient of TEST Type:Valid Alberta Patient
AND NOT Patients End Date Reason:Inactive
AND NOT Patients End Date Reason:Long Term Care
AND NOT Patients End Date Reason:Deceased
AND NOT Chart Note: ASaP "Pap_Test" contains 'total hysterectomy' or "Pap_Test" contains 'total vaginal hysterectomy' or "Pap_Test" contains 'total abdominal hysterectomy'
AND NOT Chart Note: ASaP "Pap_Test" contains 'complete hysterectomy' or "Pap_Test" contains 'TAH'
AND NOT Chart Note: Patient History "Surgical_History" contains 'total hysterectomy' or "Surgical_History" contains 'total abdominal hysterectomy' or "Surgical_History" not contains 'total vaginal hysterectomy'
AND NOT Chart Note: Patient History "Surgical_History" contains 'complete hysterectomy' or "Surgical_History" contains 'tah'
AND NOT Problem total hysterectomy
AND NOT Problem total abdominal hysterectomy
AND NOT Problem total vaginal hysterectomy
AND NOT Problem complete hysterectomy
AND NOT Problem tah

Line 1: Set age to over 25 under 70.

Line 5-6: Exclude Chart Note “ASaP” pap text line containing Total Hysterectomy, Total Abdominal Hysterectomy, Total Vaginal Hysterectomy, Complete Hysterectomy, TAH.

Line 7-8: Exclude Chart Note “Patient History” – Surgical History containing: Total Hysterectomy, Total Abdominal Hysterectomy, Total Vaginal Hysterectomy, Complete Hysterectomy, TAH.

Line 9+: Exclude patients with a problem list entry of: Total Hysterectomy, Total Abdominal Hysterectomy, Total Vaginal Hysterectomy, Complete Hysterectomy, TAH (whatever is found using search feature). Use search feature to find problem list entries like “hysterectomy – total” and exclude all appropriate options.

ESPCN- Quarterly – Pap Due

Copy your Pap Eligible query. Rename it ESPCN – Quarterly – Pap Due. Save and edit query.

ESPCN - Quarterly - Pap Due
Female Patients over 25 under 70 Patient of TEST Type:Valid Alberta Patient
AND NOT Patients End Date Reason:Inactive
AND NOT Patients End Date Reason:Long Term Care
AND NOT Patients End Date Reason:Deceased
AND NOT Chart Note: ASaP "Pap_Test" contains 'total hysterectomy' or "Pap_Test" contains 'total vaginal hysterectomy' or "Pap_Test" contains 'total abdominal hysterectomy'
AND NOT Chart Note: ASaP "Pap_Test" contains 'complete hysterectomy' or "Pap_Test" contains 'TAH'
AND NOT Chart Note: Patient History "Surgical_History" contains 'total hysterectomy' or "Surgical_History" contains 'total abdominal hysterectomy' or "Surgical_History" not contains 'total vaginal hysterectomy'
AND NOT Chart Note: Patient History "Surgical_History" contains 'complete hysterectomy' or "Surgical_History" contains 'tah'
AND NOT Problem total hysterectomy
AND NOT Problem total abdominal hysterectomy
AND NOT Problem total vaginal hysterectomy
AND NOT Problem complete hysterectomy
AND NOT Problem tah
AND (NOT Chart Note: ASaP Pap_Date In the last 3 Years
AND NOT Lab Result In the last 3 Years Gynecological Cytology
AND NOT Lab Result In the last 3 Years DKML Cytology Gynecological
AND NOT Lab Result In the last 3 Years Cytology Report; Cervical/Vaginal
AND NOT Scan In the last 3 Years Notes: Gynecological Cytology
AND NOT Scan In the last 3 Years Notes: DKML Cytology Gynecological
AND NOT Scan In the last 3 Years Type: Labs Notes: Pap)

****The following are set as Level 2****

Exclude: Chart Note: ASaP pap date in the last 3 years.

Exclude: Lab: Test Description – Gynecological Cytology in the last 3 years.

Exclude: Lab: Test Description – DKML Cytology Gynecological in the last 3 years.

Exclude: Lab: Test Description – Pap in the last 3 years.

Exclude: Scans: Image Date in the last 3 years, Notes Contain: Gynecological Cytology. Also, for DKML Cytology Gynecological. Exclude pap but only if there is a scan type: lab.

ESPCN- Quarterly – Mammo Eligible

Copy your Panel Females query. Rename it ESPCN – Quarterly – Mammo Eligible. Save. Edit Query.

ESPCN - Quarterly - Mammo Eligible
Female Patients over 45 under 75 Patient of TEST Type:Valid Alberta Patient
AND NOT Patients End Date Reason:Inactive
AND NOT Patients End Date Reason:Long Term Care
AND NOT Patients End Date Reason:Deceased

Line 1: Set age range as over 45 and under 75.

ESPCN- Quarterly – Mammo Due

Copy your Mammo Eligible query. Rename it ESPCN – Quarterly – Mammo Due. Save. Edit Query.

ESPCN - Quarterly - Mammo Due
Female Patients over 45 under 75 Patient of TEST Type:Valid Alberta Patient
AND NOT Patients End Date Reason:Inactive
AND NOT Patients End Date Reason:Long Term Care
AND NOT Patients End Date Reason:Deceased
AND (NOT Chart Note: ASaP Mammogram_Date In the last 2 Years
AND NOT Lab Result In the last 2 Years mammo
AND NOT Scan In the last 2 Years Type: Mammogram
AND NOT Scan In the last 2 Years Notes:) mammo

****The following are set as Level 2****

Exclude: Chart Note - ASaP Mammogram Date in the last 2 years.

Exclude: Labs in the last 2 years with a test description of mammo.

Exclude: Scans with an Image Date in the last 2 years with a type: Mammogram (if applicable).

Exclude: Scans with an Image Date in the last 2 years where Notes contain mammo.

ESPCN- Quarterly – CRC Eligible

Copy your Panel Full query, rename it ESPCN – Quarterly -CRC Eligible. Save. Edit Query.

ESPCN - Quarterly - CRC Eligible
Patients over 50 under 75 Patient of TEST Type:Valid Alberta Patient
AND NOT Patients End Date Reason:Inactive
AND NOT Patients End Date Reason:Long Term Care
AND NOT Patients End Date Reason:Deceased

Line 1: Set age range as over 50 and under 75.

ESPCN- Quarterly – CRC Due

Copy your CRC Eligible query, rename it ESPCN – Quarterly – CRC Due. Save. Edit query.

ESPCN - Quarterly - CRC Due
Patients over 50 under 75 Patient of TEST Type:Valid Alberta Patient
AND NOT Patients End Date Reason:Inactive
AND NOT Patients End Date Reason:Long Term Care
AND NOT Patients End Date Reason:Deceased
AND (NOT Chart Note: ASaP FOBT_FIT_Date In the last 2 Years
AND NOT Chart Note: ASaP Flex_Sig_Date In the last 5 Years
AND NOT Chart Note: ASaP Colonoscopy_Date In the last 10 Years
AND NOT Lab Result In the last 2 Years Immunochemical
AND NOT Lab Result In the last 2 Years Occult Blood (FIT); Stool; Manual
AND NOT Lab Result In the last 5 Years sigmoidoscopy
AND NOT Lab Result In the last 10 Years colonoscopy
AND NOT Scan In the last 2 Years Type: Labs Notes: FIT
AND NOT Scan In the last 2 Years Type: Labs Notes: fecal immunochemical test
AND NOT Scan In the last 5 Years Notes: sigmoidoscopy
AND NOT Scan In the last 10 Years Type: Colonoscopy
AND NOT Scan In the last 10 Years Notes:) colonoscopy

****The following are set as Level 2****

Exclude: Chart Note - ASaP FIT Date in the last 2 years.

Exclude: Chart Note - ASaP Flex Sig Date in the last 5 years.

Exclude: Chart Note - ASaP Colonoscopy Date in the last 10 years.

Exclude: Labs in the last 2 years with a test description of Immunochemical.

Exclude: Labs in the last 2 years with a test description of FIT.

Exclude: Labs in the last 5 years with a test description of sigmoidoscopy.

Exclude: Labs in the last 10 years with a test description of colonoscopy.

Exclude: Scans with an Image Date in the last 2 years with a type: Labs (if applicable) Notes contain FIT. **do not just search scans for FIT, can pull incorrect info ex: benefit.*

Exclude: Scans with an Image Date in the last 2 years where Notes contain Fecal Immunochemical Test.

Exclude: Scans with an Image Date in the last 5 years where Notes contain sigmoidoscopy.

Exclude: Scans with an Image Date in the last 10 years with a type: Colonoscopy (if applicable).

Exclude: Scans with an Image Date in the last 10 years where notes contain Colonoscopy.

ESPCN- Quarterly – Diabetes Eligible

Copy your Panel Full query, rename it ESPCN – Quarterly – Diabetes Eligible. Save. Edit query

ESPCN - Quarterly - Diabetes Eligible
Patients over 40 Patient of TEST Type:Valid Alberta Patient
AND NOT Patients End Date Reason:Inactive
AND NOT Patients End Date Reason:Long Term Care
AND NOT Patients End Date Reason:Deceased

Line 1 – set age range as over 40.

ESPCN- Quarterly – Diabetes Due

Copy your Diabetes Eligible query, rename it ESPCN – Quarterly – Diabetes Due. Save. Edit Query

ESPCN - Quarterly - Diabetes Due
Patients over 40 Patient of TEST Type:Valid Alberta Patient
AND NOT Patients End Date Reason:Inactive
AND NOT Patients End Date Reason:Long Term Care
AND NOT Patients End Date Reason:Deceased
AND (NOT Chart Note: ASaP a1c_date In the last 5 Years
AND NOT Chart Note: ASaP FG_date In the last 5 Years
AND NOT Chart Note: ASaP DRC_date In the last 5 Years
AND NOT Lab Result In the last 5 Years HbA1c/Total Hemoglobin
AND NOT Lab Result In the last 5 Years HbA1c
AND NOT Lab Result In the last 5 Years Glucose Baseline
AND NOT Scan In the last 5 Years Notes: a1c
AND NOT Scan In the last 5 Years Notes: glucose, fasting
AND NOT Scan In the last 5 Years Notes:)
fasting glucose

****The following are set as Level 2****

Exclude: Chart Note - ASaP a1c Date in the last 5 years.

Exclude: Chart Note - ASaP FG Date in the last 5 years.

Exclude: Chart Note - ASaP Diabetes Risk Calc. Date in the last 5 years. (if applicable)

Exclude: Labs in the last 5 years with a test description of a1c.

Exclude: Labs in the last 5 years with a test description of hba1c.

Exclude: Labs in the last 5 years with a test description of glucose, fasting.

Exclude: Scans with an Image Date in the last 5 years where Notes contain a1c.

Exclude: Scans with an Image Date in the last 5 years where Notes contain glucose, fasting.

Exclude: Scans with an Image Date in the last 5 years where Notes contain fasting glucose.

ESPCN- Quarterly – Lipids Eligible

Copy your Panel Full query, rename it ESPCN – Quarterly – Lipids Eligible. Save. Edit Query

ESPCN - Quarterly - Lipids Eligible
Patients over 40 under 75 Patient of TEST Type:Valid Alberta Patient
AND NOT Patients End Date Reason:Inactive
AND NOT Patients End Date Reason:Long Term Care
AND NOT Patients End Date Reason:Deceased
AND NOT Medication Crestor Active Rx
AND NOT Medication Lipitor Active Rx
AND NOT Medication Pravachol Active Rx
AND NOT Medication Zocor Active Rx
AND NOT Medication astatin Active Rx

Line 1 – set age range as over 40 under 75.

Exclude patients with Medications: Active RX only, drug name: Crestor. Repeat for Lipitor, Pravachol, Zocor and astatin.

ESPCN- Quarterly – Lipids Due

Copy your Lipids Eligible query, rename it ESPCN – Quarterly – Lipids Due. Save. Edit Query

ESPCN - Quarterly - Lipids Due
Patients over 40 under 75 Patient of TEST Type:Valid Alberta Patient
AND NOT Patients End Date Reason:Inactive
AND NOT Patients End Date Reason:Long Term Care
AND NOT Patients End Date Reason:Deceased
AND NOT Medication Crestor Active Rx
AND NOT Medication Lipitor Active Rx
AND NOT Medication Pravachol Active Rx
AND NOT Medication Zocor Active Rx
AND NOT Medication astatin Active Rx
AND NOT Lab Result In the last 5 Years Lipid
AND NOT Lab Result In the last 5 Years Cardiovascular Disease Risk
AND NOT Scan In the last 5 Years Type: Labs Notes: lipid)

****The following are set as Level 2****

Exclude: Chart Note – AsaP lipid date in the last 5 years.

Exclude: Labs in the last 5 years with a test description of lipid.

Exclude: Labs in the last 5 years with a test description of cardiovascular disease risk.

Exclude: Scans with an Image Date in the last 5 years where Notes contain lipid (specify scan type: labs if applicable).

ESPCN- Quarterly – CV Risk Eligible

Copy your Lipids Eligible query, rename it ESPCN – Quarterly – CV Risk Eligible. Save. No need to edit query.

ESPCN - Quarterly - CV Risk Eligible
Patients over 40 under 75 Patient of TEST Type:Valid Alberta Patient
AND NOT Patients End Date Reason:Inactive
AND NOT Patients End Date Reason:Long Term Care
AND NOT Patients End Date Reason:Deceased
AND NOT Medication Crestor Active Rx
AND NOT Medication Lipitor Active Rx
AND NOT Medication Pravachol Active Rx
AND NOT Medication Zocor Active Rx
AND NOT Medication astatin Active Rx

ESPCN- Quarterly – CV Risk Due

Copy your CV Risk Eligible query, rename it ESPCN – Quarterly – CV Risk Due. Save. Edit Query

ESPCN - Quarterly - CV Risk Due	
Patients over 40 under 75 Patient of TEST Type:Valid Alberta Patient	
AND NOT Patients End Date Reason:Inactive	
AND NOT Patients End Date Reason:Long Term Care	
AND NOT Patients End Date Reason:Deceased	
AND NOT Medication Crestor Active Rx	
AND NOT Medication Lipitor Active Rx	
AND NOT Medication Pravachol Active Rx	
AND NOT Medication Zocor Active Rx	
AND NOT Medication astatin Active Rx	
AND (NOT Chart Data: In the last 5 Years any field contains CVR	
AND NOT Chart Data: In the last 5 Years any field contains CV Risk	
AND NOT Chart Data: In the last 5 Years any field contains Cardiovascular Risk	
AND NOT Chart Data: In the last 5 Years any field contains Cardiovascular Disease Risk	
AND NOT Chart Data: In the last 5 Years any field contains FRS	
AND NOT Chart Data: In the last 5 Years any field contains framingham	
AND NOT Chart Note: ASaP CV_Risk_Date In the last 5 Years	
AND NOT Form In the last 5 Years Framingham Cardiovascular Risk Assessment	
AND NOT Lab Result In the last 5 Years Over 1 10-year Cardiovascular Disease Risk	
AND NOT Scan In the last 5 Years Notes: CVR	
AND NOT Scan In the last 5 Years Notes: CV Risk	
AND NOT Scan In the last 5 Years Notes: Cardiovascular Risk	
AND NOT Scan In the last 5 Years Notes: Cardiovascular Disease Risk	
AND NOT Scan In the last 5 Years Notes: FRS	
AND NOT Scan In the last 5 Years Notes: Framingham)

****The following are set as Level 2****

Exclude: Chart Data – In the last 5 years, any field contains: CVR. Copy and duplicate for CV Risk, Cardiovascular Risk, Cardiovascular Disease Risk, FRS, Framingham.

Exclude: Chart Note: ASaP – CV Risk Date in the last 5 years.

Exclude: Form with a date in the last 5 years, form type: Framingham (search and select all applicable).

Exclude: Labs in the last 5 years with a test description of cardiovascular disease risk with a result value >= 1.

Exclude: Scans with an Image Date in the last 5 years where Notes contain CVR. Copy and duplicate for CV Risk, Cardiovascular Risk, Cardiovascular Disease Risk, FRS, Framingham.

Quarterly QI Queries

ESPCN- Quarterly QI- Active Patients (Denominator)

Copy your Panel Full query, rename as ESPCN – Quarterly QI – Active Patients (Denominator). Save. No need to edit.

ESPCN - Quarterly QI - Active Patients (Denominator)
Patients Patient of TEST Type:Valid Alberta Patient
AND NOT Patients End Date Reason:Inactive
AND NOT Patients End Date Reason:Long Term Care
AND NOT Patients End Date Reason:Deceased

ESPCN – Quarterly QI- Patients 75+ (Denominator)

Copy your Quarterly QI – Active Patients (Denominator) query, rename ESPCN – Quarterly QI – Patients 75+ (Denominator).

ESPCN - Quarterly QI - Patients 75+ (Denominator)
Patients over 75 Patient of TEST Type:Valid Alberta Patient
AND NOT Patients End Date Reason:Inactive
AND NOT Patients End Date Reason:Long Term Care
AND NOT Patients End Date Reason:Deceased

Line 1 – set age range as over 75.

ESPCN – Quarterly QI - Pts with a Chronic Disease (Denominator)

Copy your Quarterly QI – Active Patients (Denominator) query, rename ESPCN – Quarterly QI – Pts with a Chronic Disease (Denominator).

ESPCN - Quarterly QI - Chronic Disease Patients (Denominator)	
Patients Patient of TEST Type:Valid Alberta Patient	
AND NOT Patients End Date Reason:Inactive	
AND NOT Patients End Date Reason:Long Term Care	
AND NOT Patients End Date Reason:Deceased	
AND (AH Claim 250	
OR AH Claim 401	
OR AH Claim 410	
OR AH Claim 411	
OR AH Claim 412	
OR AH Claim 413	
OR AH Claim 414	
OR AH Claim 420	
OR AH Claim 421	
OR AH Claim 422	
OR AH Claim 423	
OR AH Claim 424	
OR AH Claim 425	
OR AH Claim 426	
OR AH Claim 427	
OR AH Claim 428	
OR AH Claim 429	
OR AH Claim 440	
OR AH Claim 441	
OR AH Claim 491	
OR AH Claim 492	
OR AH Claim 496	
OR AH Claim 585	
OR AH Claim 586)	

****The following are set as Level 2****

Include patients with a Claim – Diagnostic Code of 250.

Copy the above line, change the copy to OR instead of AND, change diagnostic code to 401. Copy this line and duplicate for 410-414, 420-429, 440-441, 491-492, 496, 585-586.

ESPCN – Quarterly QI - Patients, Seen in the Last 3 Years (Numerator)

Copy your Quarterly QI – Active Patients (Denominator) query, and rename ESPCN – Quarterly QI – Patients, Seen in the Last 3 Years (Numerator).

ESPCN - Quarterly QI - Patients Seen in the Last 3 Years (Numerator)	
Patients Patient of TEST Type:Valid Alberta Patient	
AND NOT Patients End Date Reason:Inactive	
AND NOT Patients End Date Reason:Long Term Care	
AND NOT Patients End Date Reason:Deceased	
AND (Appointment In the last 3 Years Doctor: TESTDone)	

**** Set as Level 2****

Include patients with a “done” appointments with the Default Doctor in the last 3 years.

ESPCN – Quarterly QI - Patients 75+, Seen in the Last Year (Numerator)

Copy your Quarterly QI – Active Patients (Denominator) query, rename ESPCN – Quarterly QI – Patients 75+, Seen in the Last Year (Numerator).

ESPCN – Quarterly QI – Patients 75+, Seen in the Last Year (Numerator)	
Patients over 75 Patient of TEST Type:Valid Alberta Patient	
AND NOT Patients End Date Reason:Inactive	
AND NOT Patients End Date Reason:Long Term Care	
AND NOT Patients End Date Reason:Deceased	
AND (Appointment In the last 1 Years Doctor:)	TESTDone

**** Set as Level 2****

Include patients with a “done” appointments with the Default Doctor in the last 1 year.

ESPCN – Quarterly QI - Pts with a Chronic Disease, Seen in the Last Year (Numerator)

Copy your Quarterly QI – Active Patients (Denominator) query, rename ESPCN – Quarterly QI – Pts with a Chronic Disease, Seen in the Last Year (Numerator).

ESPCN - Quarterly QI - Chronic Disease Patients (Denominator)	
Patients Patient of TEST Type:Valid Alberta Patient	
AND NOT Patients End Date Reason:Inactive	
AND NOT Patients End Date Reason:Long Term Care	
AND NOT Patients End Date Reason:Deceased	
AND (AH Claim 250	
OR AH Claim 401	
OR AH Claim 410	
OR AH Claim 411	
OR AH Claim 412	
OR AH Claim 413	
OR AH Claim 414	
OR AH Claim 420	
OR AH Claim 421	
OR AH Claim 422	
OR AH Claim 423	
OR AH Claim 424	
OR AH Claim 425	
OR AH Claim 426	
OR AH Claim 427	
OR AH Claim 428	
OR AH Claim 429	
OR AH Claim 440	
OR AH Claim 441	
OR AH Claim 491	
OR AH Claim 492	
OR AH Claim 496	
OR AH Claim 585	
OR AH Claim 586)	
AND (Appointment In the last 1 Years Doctor: TESTDone)

**** Set as Level 3****

Include patients with a “done” appointments with the Default Doctor in the last 1 year.

ESPCN – Quarterly QI – Patients with Diabetes (Denominator)

Copy your Quarterly QI – Active Patients (Denominator) query and rename ESPCN – Quarterly QI – Patients with Diabetes (Denominator).

ESPCN - Quarterly QI - Patients With Diabetes (Denominator)	
Patients over 18 Patient of TEST Type:Valid Alberta Patient	
AND NOT Patients End Date Reason:Inactive	
AND NOT Patients End Date Reason:Long Term Care	
AND NOT Patients End Date Reason:Deceased	
AND AH Claim 250	
AND (Lab Result Over 6.5 HbA1c/Total Hemoglobin	
OR Lab Result Over 7.0 Glucose Baseline)	

Line 1 – set age range as over 18.

Add a claim line to include patients who have had a 250 diagnostic code.

**** Set as Level 2****

Add a lab results line to include patients with a test description 'A1c' and result value ≥ 6.5 .

Add a lab results line to include patients with a test description 'glucose, fasting' and result value ≥ 7.0 , set criteria from 'AND' to 'OR'.

ESPCN – Quarterly QI – Patients with Diabetes with A1c in the Last Six Months (Numerator)

Copy your Quarterly QI – Patients with Diabetes (Denominator) query and rename ESPCN – Quarterly QI – Patients with Diabetes with A1c in the Last Six Months (Numerator)

ESPCN - Quarterly QI - Patients With Diabetes w/ an A1c in the Last 6 Months (denom)	
Patients over 18 Patient of TEST Type:Valid Alberta Patient	
AND NOT Patients End Date Reason:Inactive	
AND NOT Patients End Date Reason:Long Term Care	
AND NOT Patients End Date Reason:Deceased	
AND AH Claim 250	
AND (Lab Result Over 6.5 HbA1c/Total Hemoglobin	
OR Lab Result Over 7.0 Glucose Fasting)	
AND (Lab Result In the last 6 Months HbA1c/Total Hemoglobin	
OR Chart Note: ASaP a1c_date In the last 6 Months)	

**** Set as Level 3****

Add a lab results line to include patients with a test description 'A1c' in the last six months.

Add a chart note line to include patients with an AsaP chart type with Other Date: 'a1c_date' in the last six months. Change AND to OR.

ESPCN – Quarterly QI – Patients with Diabetes with a DFE in the Last Year (Numerator)

Copy your Quarterly QI – Patients with Diabetes (Denominator) query and rename ESPCN – Quarterly QI – Patients with Diabetes with a DFE in the Last Year (Numerator)

ESPCN - Quarterly QI - Patients With Diabetes w/ a DFE in the Last Year (numerator)	
Patients over 18 Patient of TEST Type:Valid Alberta	Patient
AND NOT Patients End Date Reason:Inactive	
AND NOT Patients End Date Reason:Long Term Care	
AND NOT Patients End Date Reason:Deceased	
AND AH Claim 250	
AND (Lab Result Over 6.5 HbA1c/Total Hemoglobin	
OR Lab Result Over 7.0 Glucose Baseline)	
AND (Form In the last 1 Years AHS Diabetes Foot Screening Tool 2020	
OR Form In the last 1 Years PCN Edmonton Southside Diabetes Annual Foot Exam	
OR Form In the last 1 Years Inlows 60-second diabetic foot screen P1	
OR Scan In the last 1 Years Notes: DFA	
OR Scan In the last 1 Years Notes: DFE	
OR Scan In the last 1 Years Notes: diabetic foot	
OR Scan In the last 1 Years Notes: diabetes foot	
OR Scan In the last 1 Years Notes: foot exam	
OR Scan In the last 1 Years Notes: foot screen)	

**** Set as Level 3****

Add a form line to include patients with a form type 'AHS Diabetes Foot Screening Tool 2020'.

Copy the above line and change the form type to 'PCN Edmonton Southside Diabetes Annual Foot Exam'. Change AND to OR.

Repeat and change the form type to 'Inlows 60-second diabetic foot screen P1'.

Add a scan line to include patients with an image date in the last 1 year, notes contain 'DFA'. Change AND to OR. Copy this line and replace 'DFA' for each of the following phrases: DFE, diabetic foot, diabetes foot, foot exam, foot screen.

Create another scan line to search for DFE specific scan types in the last year, if used in clinic as well.

ESPCN – Quarterly QI – Pts with DM, A1c result, uncontrolled – 1 year (Numerator)

Copy your Quarterly QI – Patients with Diabetes (Denominator) query and rename ESPCN – Quarterly QI – Pts with DM, A1c result, uncontrolled – 1 year (Numerator)

ESPCN - Quarterly QI - Patients with DM, A1c result, uncontrolled - 1 year (Numerator)	
Patients over 18 Patient of TEST Type:Valid Alberta	Patient
AND NOT Patients End Date Reason:Inactive	
AND NOT Patients End Date Reason:Long Term Care	
AND NOT Patients End Date Reason:Deceased	
AND AH Claim 250	
AND (Lab Result Over 6.5 HbA1c/Total Hemoglobin	
OR Lab Result Over 7.0 Glucose Baseline)	
AND (Lab Result In the last 1 Years Over 8.6 HbA1c/Total Hemoglobin)

**** Set as Level 3****

Copy the A1c lab result line, change the value to ≥ 8.6 and set the result date to in the last 1 year.

ESPCN – Quarterly QI – Pts with DM, A1c result – 1 year (Denominator)

Copy your Quarterly QI – Pts with DM, A1c result, uncontrolled – 1 year query and rename ESPCN – Quarterly QI – Pts with DM, A1c result – 1 year (Denominator)

ESPCN - Quarterly QI - Pts with DM, A1c result- 1 year (Denominator)	
Patients over 18 Patient of TEST Type:Valid Alberta	Patient
AND NOT Patients End Date Reason:Inactive	
AND NOT Patients End Date Reason:Long Term Care	
AND NOT Patients End Date Reason:Deceased	
AND AH Claim 250	
AND (Lab Result Over 6.5 HbA1c/Total Hemoglobin	
OR Lab Result Over 7.0 Glucose Baseline)	
AND (Lab Result In the last 1 Years HbA1c/Total Hemoglobin)

Edit the last line to remove the value, changing the line to search for any patients who have had an A1c within the last 1 year.

Quarterly QI Hypertension Queries

For the following hypertension quarterly QI queries, data will only be available if the clinic uses chart note templates with separate numeric systolic and diastolic fields that are set as 'SystolicBloodPressure' and 'DiastolicBloodPressure' field types, respectively.



To narrow down which templates to check, you can go to **Reports > Statistics > Chart Template Statistics** to see which chart templates the clinic uses most frequently.

The first screenshot shows the HealthQuest TableTop interface with the 'Reports' menu open, highlighting 'Statistics' and then 'Chart Template Statistics'. The second screenshot shows the 'Chart Template Statistics' window, which displays a list of visit descriptions and their usage counts for the selected doctor (All Doctors).

Visit Description	Usage Count
An Office Visit (SOAP) BMI	6
Nurse CDM Visit	3
Diabetes visit	2
General Examination	2
Physical Exam-Female 1	2
Progress Note	2
RN SOAP w/ complaint	2
Diabetic Note	1
ESPCN Test Diabetes Visit	1
Physical Exam-Female 2	1
Taylor Test	1

To confirm the field types are set correctly, open the chart template in the chart template designer (**Setup > Charting Setup > Template Design**), right click on the field and ensure the appropriate field type is selected.

The 'Edit Template Field' dialog box for field 't_chart_numeric_4' shows the 'Form Fields' tab. The 'Field Name' is 'SystolicBloodPressure' and the 'Field Type' is 'SystolicBloodPressure'. Below this, there are options to copy the field from a previous chart note for the patient, with dropdowns for 'Copy from Template' and 'Field'. There is also an 'AutoPopulate when other field populated' section with an 'Other Field' dropdown. Finally, there is an 'Export CII as...' section with a 'Field Name' dropdown.

ESPCN – Quarterly QI – Pts with HTN, BP measured, elevated – 1 year (Numerator)

Copy your Quarterly QI – Active patients (Denominator) query and rename ESPCN – Quarterly QI – Pts with HTN, BP measured, elevated – 1 year (Numerator)

ESPCN - Quarterly QI - Pts with HTN, BP measured, elevated - 1 year (Numerator)	
Patients over 18 Patient of SMITH Type:Valid Alberta Patient	
AND NOT Patients End Date Reason:Inactive	
AND NOT Patients End Date Reason:Long Term Care	
AND NOT Patients End Date Reason:Deceased	
AND AH Claim 401	
AND (Chart Metadata (SystolicBloodPressure)	
Over 130	
OR Chart Metadata (DiastolicBloodPressure))
Over 80	
AND (Chart Metadata)
(SystolicBloodPressure) In the last 1	
Years Over 130	

Line 1 – set age range as over 18.

Add a claim line to include patients who have had a 401 diagnostic code.

**** Set as Level 2****

Add a chart metadata line to include patients with metadata type 'SystolicBloodPressure' value ≥ 130 .

Copy the above line and change metadata type to 'DiastolicBloodPressure' and value to ≥ 80 . Change AND to OR.

**** Set as Level 3****

Copy the 'SystolicBloodPressure' metadata line again and set date to in the last 1 year.

ESPCN – Quarterly QI – Pts with HTN, BP measured – 1 year (Denominator)

Copy your Quarterly QI – Pts with HTN, BP measured, elevated – 1 year (Numerator) query and rename ESPCN – Quarterly QI – Pts with HTN, BP measured – 1 year (Denominator)

ESPCN - Quarterly QI - Pts with HTN, BP measured - 1 year (Denominator)	
Patients over 18 Patient of SMITH Type:Valid Alberta Patient	
AND NOT Patients End Date Reason:Inactive	
AND NOT Patients End Date Reason:Long Term Care	
AND NOT Patients End Date Reason:Deceased	
AND AH Claim 401	
AND (Chart Metadata (SystolicBloodPressure)	
Over 130	
OR Chart Metadata (DiastolicBloodPressure))
Over 80	
AND (Chart Metadata	
(SystolicBloodPressure) In the last 1	
Years	
OR Chart Metadata)
(DiastolicBloodPressure) In the last	
1 Years	

Remove the value from the last 'SystolicBloodPressure' metadata line.

Copy the above line and change the metadata type to 'DiastolicBloodPressure'. Change AND to OR.

ESPCN – Quarterly QI – Pts with HTN, BP measured – 6 months (Numerator)

Copy your Quarterly QI – Pts with HTN, BP measured – 1 year (Denominator) query and rename ESPCN – Quarterly QI – Pts with HTN, BP measured – 6 months (Numerator)

ESPCN - Quarterly QI - Pts with HTN, BP measured - 6 months (Numerator)	
Patients over 18 Patient of SMITH Type:Valid Alberta Patient	
AND NOT Patients End Date Reason:Inactive	
AND NOT Patients End Date Reason:Long Term Care	
AND NOT Patients End Date Reason:Deceased	
AND AH Claim 401	
AND (Chart Metadata (SystolicBloodPressure) Over 130	
OR Chart Metadata (DiastolicBloodPressure) Over 80)	
AND (Chart Metadata (SystolicBloodPressure) In the last 6 Months	
OR Chart Metadata (DiastolicBloodPressure) In the last 6 Months)	

Change the time frame of the last two chart metadata lines from 'in the last 1 year' to 'in the last 6 months'.

ESPCN – Quarterly QI – Pts with HTN (Denominator)

Copy your Quarterly QI – Pts with HTN, BP measured – 6 months (Numerator) query and rename ESPCN – Quarterly QI – Pts with HTN (Denominator)

ESPCN - Quarterly QI - Pts with HTN (Denominator)	
Patients over 18 Patient of SMITH Type:Valid Alberta Patient	
AND NOT Patients End Date Reason:Inactive	
AND NOT Patients End Date Reason:Long Term Care	
AND NOT Patients End Date Reason:Deceased	
AND AH Claim 401	
AND (Chart Metadata (SystolicBloodPressure) Over 130	
OR Chart Metadata (DiastolicBloodPressure) Over 80)	

Remove the last two chart metadata lines.

Outreach Queries

ESPCN – Outreach – Adults, No Appointment in 3 Years

Copy your ESPCN – Quarterly QI – Patients Seen in the Last 3 Years (Numerator) query, rename it ESPCN – Outreach – No Appointment in 3 years. Save. Edit query.

ESPCN - Outreach - Adults, No Appointment in 3 years	
Patients over 18 under 75 Patient of SMITH Type:Valid Alberta Patient	
AND NOT Patients End Date Reason:Inactive	
AND NOT Patients End Date Reason:Long Term Care	
AND NOT Patients End Date Reason:Deceased	
AND (NOT Appointment In the last 3 Years Doctor: SMITHDone	
AND NOT Appointment In the next 3 Months)	

Line 1 – Change age range to 18-75 years old.

Change the “done” appointment with the default doctor in the last 3 years to a “NOT” line.

Exclude patients with an appointment in the next 3 months.

ESPCN – Outreach – Pediatrics, No Appointment in 2 Years

Copy your ESPCN – Outreach – Adults, No Appointment in 2 Years query and rename it ESPCN – Outreach – Pediatrics, No Appointment in 2 Years.

ESPCN - Outreach - Pediatrics, No Appointment in 2 years
Patients under 18 Type:Valid Alberta Patient
AND NOT Patients End Date Reason:Inactive
AND NOT Patients End Date Reason:Long Term Care
AND NOT Patients End Date Reason:Deceased
AND (NOT Appointment In the last 2 Years Doctor: TESTDone
AND NOT Appointment In the next 3 Months)

Line 1 – change the age range to <18.

Change from no appointment in the last 3 years to no appointment in the last 2 years.

ESPCN – Outreach – 75+, No Appointment in 1 Year

Copy your ESPCN – Quarterly QI – Patients 75+, Seen in the Last Year (Numerator) query, rename it ESPCN – Outreach – 75+, No Appointment in 1 Year. Save. Edit query.

ESPCN – Outreach – 75+, No Appointment in 1 Year
Patients over 75 Patient of TEST Type:Valid Alberta Patient
AND NOT Patients End Date Reason:Inactive
AND NOT Patients End Date Reason:Long Term Care
AND NOT Patients End Date Reason:Deceased
AND (NOT Appointment In the last 1 Years Doctor: TESTDone
AND NOT Appointment In the next 3 Months)

Change the “done” appointment with the default doctor in the last year to a “NOT” line.

Exclude patients with an appointment in the next 3 months.

ESPCN – Outreach – Chronic Disease, No Appointment in 1 Year

Copy your ESPCN – Quarterly QI – Chronic Disease Patients, Seen in the Last Year (Numerator) query, rename it ESPCN – Outreach – Chronic Disease, No Appointment in 1 Year. Save. Edit query.

ESPCN – Outreach – Chronic Disease, No Appointment in 1 Year	
Patients over 0 under 75 Patient of TEST Type:Valid Alberta Patient	
AND NOT Patients End Date Reason:Inactive	
AND NOT Patients End Date Reason:Long Term Care	
AND NOT Patients End Date Reason:Deceased	
AND (AH Claim 250	
OR AH Claim 401	
OR AH Claim 410	
OR AH Claim 411	
OR AH Claim 412	
OR AH Claim 413	
OR AH Claim 414	
OR AH Claim 420	
OR AH Claim 421	
OR AH Claim 422	
OR AH Claim 423	
OR AH Claim 424	
OR AH Claim 425	
OR AH Claim 426	
OR AH Claim 427	
OR AH Claim 428	
OR AH Claim 429	
OR AH Claim 440	
OR AH Claim 441	
OR AH Claim 491	
OR AH Claim 492	
OR AH Claim 496	
OR AH Claim 585	
OR AH Claim 586)	
AND (NOT Appointment In the last 1 Years Doctor: TESTDone	
AND NOT Appointment In the next 3 Months)	
AND (NOT Worklists In the last 3 Months Task: Adult-No Appt. in 3Y Outreach)	

Line 1 – Change the age range to under 75.

Change the “done” appointment with the default doctor in the last year to a “NOT” line.

Exclude patients with an appointment in the next 3 months.

****Set as Level 4****

Exclude patients with an ‘Adult, No Appt. in 3 Years Outreach’ task type within the last 3 months.

ESPCN – Outreach – Pap Due, No Appointment in 1 Year

Copy your ESPCN – Quarterly – Pap Due query. Rename it ESPCN – Outreach – Pap Due, No Appointment in 1 Year. Save. Edit Query.

ESPCN – Outreach – Pap Due, No Appointment in 1 Year	
Female Patients over 25 under 70 Patient of TEST	Type:Valid Alberta Patient
AND NOT Patients End Date Reason:Inactive	
AND NOT Patients End Date Reason:Long Term Care	
AND NOT Patients End Date Reason:Deceased	
AND NOT Chart Note: ASaP "Pap_Test" contains 'total hysterectomy' or "Pap_Test" contains 'total vaginal hysterectomy' or "Pap_Test" contains 'total abdominal hysterectomy'	
AND NOT Chart Note: ASaP "Pap_Test" contains 'complete hysterectomy' or "Pap_Test" contains 'TAH'	
AND NOT Chart Note: Patient History "Surgical_History" contains 'total hysterectomy' or "Surgical_History" contains 'total abdominal hysterectomy' or "Surgical_History" not contains 'total vaginal hysterectomy'	
AND NOT Chart Note: Patient History "Surgical_History" contains 'complete hysterectomy' or "Surgical_History" contains 'tah'	
AND NOT Problem total hysterectomy	
AND NOT Problem total abdominal hysterectomy	
AND NOT Problem total vaginal hysterectomy	
AND NOT Problem complete hysterectomy	
AND NOT Problem tah	
AND (NOT Chart Note: ASaP Pap_Date In the last 3 Years	
AND NOT Lab Result In the last 3 Years Gynecological Cytology	
AND NOT Lab Result In the last 3 Years DKML Cytology Gynecological	
AND NOT Lab Result In the last 3 Years Cytology Report; Cervical/Vaginal	
AND NOT Scan In the last 3 Years Notes: Gynecological Cytology	
AND NOT Scan In the last 3 Years Notes: DKML Cytology Gynecological	
AND NOT Scan In the last 3 Years Type: Labs Notes: Pap)	
AND (NOT Appointment In the last 1 Years Doctor: TESTDone	
AND NOT Appointment In the next 3 Months)	
AND (NOT Worklists In the last 3 Months Task: Adult-No Appt. in 3Y Outreach)	

****Set as Level 3****

Change the “done” appointment with the default doctor in the last year to a “NOT” line.

Exclude patients with an appointment in the next 3 months.

****Set as Level 4****

Exclude patients with an ‘Adult, No Appt. in 3 Years Outreach’ task type within the last 3 months.

ESPCN – Outreach – Mammo Due, No Appointment in 1 Year

Copy your ESPCN – Quarterly – Mammo Due query. Rename it ESPCN – Outreach – Mammo Due, No Appointment in 1 Year. Save. Edit Query.

ESPCN – Outreach – Mammo Due, No Appointment in 1 Year	
Female Patients over 45 under 75 Patient of TEST	
Type:Valid Alberta Patient	
AND NOT Patients End Date Reason:Inactive	
AND NOT Patients End Date Reason:Long Term Care	
AND NOT Patients End Date Reason:Deceased	
AND (NOT Chart Note: ASaP Mammogram_Date In the last 2 Years	
AND NOT Lab Result In the last 2 Years mammo	
AND NOT Scan In the last 2 Years Type: Mammogram	
AND NOT Scan In the last 2 Years Notes:)	
AND (NOT Appointment In the last 1 Years Doctor: TESTDone	
AND NOT Appointment In the next 3 Months)	
AND (NOT Worklists In the last 3 Months Task: Adult-No Appt. in 3Y Outreach)	

****Set as Level 3****

Change the “done” appointment with the default doctor in the last year to a “NOT” line.

Exclude patients with an appointment in the next 3 months.

****Set as Level 4****

Exclude patients with an ‘Adult, No Appt. in 3 Years Outreach’ task type within the last 3 months.

ESPCN – Outreach – CRC Due, No Appointment in 1 Year

Copy your ESPCN – Quarterly – CRC Due query. Rename it ESPCN – Outreach – CRC Due, No Appointment in 1 Year. Save. Edit Query.

ESPCN – Outreach – CRC Due, No Appointment in 1 Year	
Patients over 50 under 75 Patient of TEST	
Type:Valid Alberta Patient	
AND NOT Patients End Date Reason:Inactive	
AND NOT Patients End Date Reason:Long Term Care	
AND NOT Patients End Date Reason:Deceased	
AND (NOT Chart Note: ASaP FOBT_FIT_Date In the last 2 Years	
AND NOT Chart Note: ASaP Flex_Sig_Date In the last 5 Years	
AND NOT Chart Note: ASaP Colonoscopy_Date In the last 10 Years	
AND NOT Lab Result In the last 2 Years Immunochemical	
AND NOT Lab Result In the last 2 Years Occult Blood (FIT); Stool; Manual	
AND NOT Lab Result In the last 5 Years sigmoidoscopy	
AND NOT Lab Result In the last 10 Years colonoscopy	
AND NOT Scan In the last 2 Years Type: Labs Notes: FIT	
AND NOT Scan In the last 2 Years Type: Labs Notes: fecal immunochemical test	
AND NOT Scan In the last 5 Years Notes: sigmoidoscopy	
AND NOT Scan In the last 10 Years Type: Colonoscopy	
AND NOT Scan In the last 10 Years Notes:)	
AND (NOT Appointment In the last 1 Years Doctor: TESTDone	
AND NOT Appointment In the next 3 Months)	
AND (NOT Worklists In the last 3 Months Task: Adult-No Appt. in 3Y Outreach)	

****Set as Level 3****

Change the “done” appointment with the default doctor in the last year to a “NOT” line.

Exclude patients with an appointment in the next 3 months. ****Set as Level 4****

Exclude patients with an ‘Adult, No Appt. in 3 Years Outreach’ task type within the last 3 months.

ESPCN – Outreach – Diabetes Due, No Appointment in 1 Year

Copy your ESPCN – Quarterly – Diabetes Due query. Rename it ESPCN – Outreach – Diabetes Due, No Appointment in 1 Year. Save. Edit Query.

ESPCN – Outreach – Diabetes Due, No Appointment in 1 Year	
Patients over 40 Patient of TEST Type:Valid Alberta Patient	
AND NOT Patients End Date Reason:Inactive	
AND NOT Patients End Date Reason:Long Term Care	
AND NOT Patients End Date Reason:Deceased	
AND (NOT Chart Note: ASaP a1c_date In the last 5 Years	
AND NOT Chart Note: ASaP FG_date In the last 5 Years	
AND NOT Chart Note: ASaP DRC_date In the last 5 Years	
AND NOT Lab Result In the last 5 Years HbA1c/Total Hemoglobin	
AND NOT Lab Result In the last 5 Years HbA1c	
AND NOT Lab Result In the last 5 Years Glucose Baseline	
AND NOT Scan In the last 5 Years Notes: a1c	
AND NOT Scan In the last 5 Years Notes: glucose, fasting	
AND NOT Scan In the last 5 Years Notes:)	
AND (NOT Appointment In the last 1 Years Doctor: TESTDone	
AND NOT Appointment In the next 3 Months)	
AND (NOT Worklists In the last 3 Months Task: Adult-No Appt. in 3Y Outreach)

****Set as Level 3****

Change the “done” appointment with the default doctor in the last year to a “NOT” line.

Exclude patients with an appointment in the next 3 months.

****Set as Level 4****

Exclude patients with an ‘Adult, No Appt. in 3 Years Outreach’ task type within the last 3 months.

ESPCN – Outreach – Lipids Due, No Appointment in 1 Year

Copy your ESPCN – Quarterly – Lipids Due query. Rename it ESPCN – Outreach – Lipids Due, No Appointment in 1 Year. Save. Edit Query.

ESPCN – Outreach – Lipids Due, No Appointment in 1 Year	
Patients over 40 under 75 Patient of TEST Type:Valid Alberta Patient	
AND NOT Patients End Date Reason:Inactive	
AND NOT Patients End Date Reason:Long Term Care	
AND NOT Patients End Date Reason:Deceased	
AND NOT Medication Crestor Active Rx	
AND NOT Medication Lipitor Active Rx	
AND NOT Medication Pravachol Active Rx	
AND NOT Medication Zocor Active Rx	
AND NOT Medication astatin Active Rx	
AND (NOT Chart Note: ASaP lipid_date In the last 5 Years	
AND NOT Lab Result In the last 5 Years Lipid	
AND NOT Lab Result In the last 5 Years Cardiovascular Disease Risk	
AND NOT Scan In the last 5 Years Type: Labs Notes: lipid)	
AND (NOT Appointment In the last 1 Years Doctor: TESTDone	
AND NOT Appointment In the next 3 Months)	
AND (NOT Worklists In the last 3 Months Task: Adult-No Appt. in 3Y Outreach)

****Set as Level 3****

Change the “done” appointment with the default doctor in the last year to a “NOT” line.

Exclude patients with an appointment in the next 3 months.

****Set as Level 4****

Exclude patients with an ‘Adult, No Appt. in 3 Years Outreach’ task type within the last 3 months.

Tracking Query

ESPCN – Tracking – Screening Reviewed by PCCA in 1 Week

ESPCN - Tracking - Screening Reviewed by PCCA in 1 Week
Patients Patient of TEST Type:Valid Alberta Patient
AND Chart Note: ASaP Screening_Reviewed_by_PCCA In the last 5 Days

Line 1: Clients – Set default doctor, select client type: Valid Alberta Patients.

Line 2: Chart Notes – AsaP, Other Date: Screening Reviewed by PCCA in the last 5 days.

ESPCN – Tracking – Outreach

ESPCN - Tracking - Outreach
Patients Patient of SMITH Type:Valid Alberta Patient
AND Worklists In the last 5 Days Task: 75+ Outreach

Line 1: Clients – Set default doctor, select client type: Valid Alberta Patients.

Line 2: Worklists – Task: Outreach, Due Date: in the last 5 days.

****PCCA will select the desired task type from the 'Task' dropdown menu****

Notifications

Copy your ESPCN – Quarterly – Pap Due rename as Pap Due. Check off boxes for Notify on Chart and Notify on Appointments. Duplicate this process for Mammo Due, CRC Due, Diabetes Due, Lipids Due.

Example:

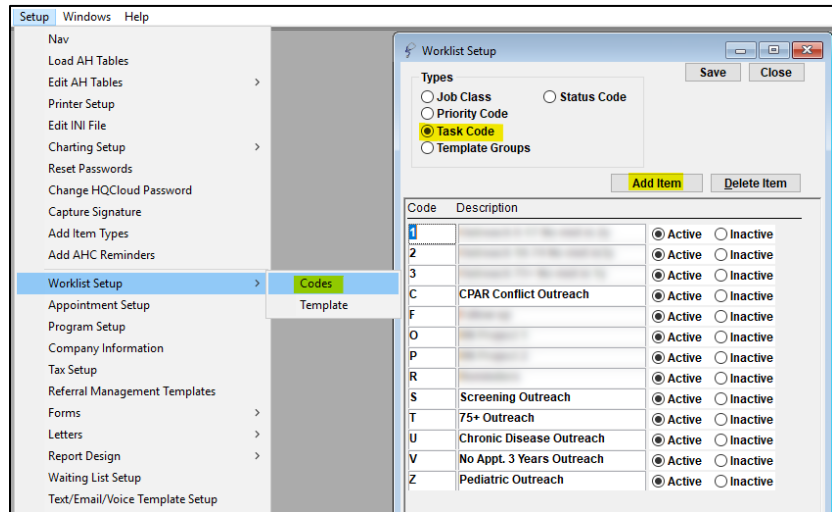
Desc:	Pap Due		
Priority:	Normal	Defer by:	
		days	Confidential:
<input checked="" type="checkbox"/> Notify on Chart	<input checked="" type="checkbox"/> Notify on Appointments		(none)
		Doctor:	

Building Worklist Templates

First, create task codes for each of the worklist types by going to **Setup > Worklist Setup > Codes** and select **Task Code**.

Add the following task codes:

- *No Appt. 3 Years Outreach*
- *Pediatric Outreach*
- *75+ Outreach*
- *Chronic Disease Outreach*
- *Screening Outreach*
- *CPAR Conflict Outreach*



Then navigate to **Setup > Worklist Setup > Template** to create a new worklist template for each of the task codes you just created. (The 'Template Name' field has a character limit and is not visible when PCCA's create worklists, therefore it is more important for the Description to be most accurate rather than the name.)

Template Name	Template Group	Task Type	Employee	Job Class	Doctor	Site
75+ Outreach	PCCA Templates	75+ Outreach	Gosche, Stephanie			All Sites
Chronic Disease Outreach	PCCA Templates	Chronic Disease Outreach	Gosche, Stephanie			All Sites
CPAR Conflict Outreach	PCCA Templates	CPAR Conflict Outreach	Test, Doc		TEST	All Sites
No Appt in 3 Years Outreach	PCCA Templates	No Appt. 3 Years Outreach	Gosche, Stephanie			All Sites
Pediatric Outreach	PCCA Templates	Pediatric Outreach				All Sites
Screening Outreach	PCCA Templates	Screening Outreach	Gosche, Stephanie			All Sites

Template Name: No Appt in 3 Years Outreach Today: Jul 02, 2025

Template Group: PCCA Templates Start Date: Days (Jul 02, 2025)

Site: All Sites Due Date: Days (Jul 02, 2025)

Description: Adult, No Appt in 3 Years Outreach

Employee: Gosche, Stephanie **Task:** No Appt. 3 Years Outreach

Job Class: **Status:** Pending

Doctor: **Priority:** Low

☐ Recurring Task: Days ☐ Return To: or ☐ Confidential

Notes:
LM to call back. Please confirm demographics and that Dr. Smith is still their GP. Offer appt. as patient has not been seen in >3 years.

Template Name	Description	Task Type (Task Code)
No Appt in 3 Years Outreach	Adult, No Appt. in 3 Years Outreach	No Appt. 3 Years Outreach
Pediatric Outreach	Pediatrics, No Appt. in 2 Years Outreach	Pediatric Outreach
75+ Outreach	75+, No Appt. in 1 Year Outreach	75+ Outreach
Chronic Disease Outreach	Chronic Disease, No Appt. in 1 Year Outreach	Chronic Disease Outreach
Screening Outreach	Screening Outreach	Screening Outreach
CPAR Conflict Outreach	CPAR Conflict Outreach	CPAR Conflict Outreach

Remember to select the PCCA's name under the 'Employee' dropdown menu.